



EXOTIC JAPAN
TOUR & TRAVEL

Highlight Japan 14 days

Day 1: Tokyo

Arrive in Narita or Haneda Airport.

Transfer to Hotel in Tokyo by private car.

Day 2: Tokyo

Asakusa

Asakusa is famous for the Kaminarimon gate.

Walking through the shopping district bustling with traditional sweets and crafts, then you will see Sensoji, a Buddhist temple with a history of nearly 1,400 years.

Enjoy the good old Japanese lifestyle that has been handed down from generation to generation.



Akihabara



at-home cafe / Akihabara©Infinia Co., Ltd

Akihabara is the sanctuary of Japanese anime and manga culture.

Maid cafes are especially popular, where visitors can enjoy coffee and food served by maids.

It is also famous as a city of home electronics and a gathering place for Japanese electrical products

Shibuya

Shibuya is the center of Japan's youth.

The most famous part of Shibuya, where new trends and culture are constantly emerging, is the scramble crossing.

The scramble crossing, with more than a thousand people passing through it at one time, is known to be the busiest intersection in the world.



Day 3: Tokyo

Tsukiji Market

Tsukiji Market was once Tokyo's fish market, but now the fish market has been relocated, leaving behind a vibrant shopping district. Many traditional Japanese foods and foodstuffs can be found in the streets that retain the appearance of those days.



TeamLab Planets TOKYO DMM.com



A museum where you walk through water, and a garden where you become one with the flowers. It comprises 4 large-scale artwork spaces and 2 gardens created by art collective teamLab. People go barefoot and immerse their entire bodies in the vast artworks together with others. The artworks change under the presence of people, blurring the perception of boundaries between the self and the works.

Photo: teamLab, Floating in the Falling Universe of Flowers © teamLab

Ginza

Ginza is Japan's premier district for the high quality restaurants, luxury brands, and long-established department stores etc.

The mixture of new and old stores makes for an elegant cityscape.





EXOTIC JAPAN
TOUR & TRAVEL

Day 4: Tokyo

- All day free time.

Day 5: Tokyo/Hakone

The Lake Ashi and Hakone Ropeway

Lake Ashi, a caldera lake in Hakone, is famous for its natural beauty. The red torii gate of Hakone Shrine standing by the lake is an impressive sight against the backdrop of the majestic Mount Fuji, which is visible when the weather is fine.

From the lakeside to Owakudani, you can take a ropeway up to reach it.



Owakudani



Owakudani is also one of the view spots of Mt. Fuji. There is a chance to see a different view of Mt. Fuji because it is at a higher elevation than Lake Ashi.

Owakudani was formed by a volcanic collapse caused by an eruption about 3,000 years ago.

Onsen experience (Hot springs)

Experiencing a Japanese onsen means immersing in soothing hot spring waters, often amid beautiful nature. The mineral-rich baths rejuvenate the body and mind, while the serene ambiance offers a deep sense of relaxation and cultural connection.





EXOTIC JAPAN
TOUR & TRAVEL

Day 6: Hakone/Kyoto

- Transfer from Hakone to Kyoto via Odawara.

Kiyomizu-dera Temple



Kiyomizu-dera Temple is a World Heritage site with a history of about 1,250 years. The temple's most famous feature is the Kiyomizu-Dera stage. Built without the use of a single nail, this wooden structure stretches over a sheer cliff, offering visitors a breathtaking panoramic view of the city and surrounding mountains. Sannenzaka Old town historic streets in Kyoto that lead up to the iconic Kiyomizu-dera Temple.

Gion District

The Gion district is a popular place to enjoy impressive Japanese architecture, including traditional buildings and bridges. Visitors can experience the rich culture cultivated in Kyoto, previously the capital of Japan for 1,000 years, just by passing through the city.





EXOTIC JAPAN
TOUR & TRAVEL

Day 7: Kyoto

Fushimi Inari Taisha

Fushimi Inari is one of the oldest and largest Japanese Shinto shrines in Kyoto, founded in the early 700s. It is famous for thousands Torii gates and is a top tourist spot in Kyoto. There are over 10,000 torii gates here. It has a mysterious appearance, like the entrance to another world.



Kinkaku-ji Temple (Golden Pavilion)



Kinkakuji Temple, also known as the Golden Pavilion. This stunning Zen Buddhist temple is one of Kyoto's most iconic landmarks and a UNESCO World Heritage Site.

The beautiful gardens surrounding the pavilion are also well worth a visit. With a variety of trees and ponds, they are designed to create a sense of harmony and tranquility.

Arashiyama Bamboo Forest

The Bamboo Grove in Arashiyama, Kyoto, is a peaceful pathway surrounded by towering bamboo stalks, creating a serene and mystical atmosphere. The grove is a popular spot for visitors seeking tranquility and natural beauty. A walk through this enchanting bamboo forest offers a unique and unforgettable connection with nature.





EXOTIC JAPAN
TOUR & TRAVEL

Day 8: One day excursion to Nara from Kyoto

Nara Park



Nara Park is world famous for its serene atmosphere and especially its friendly herds of deer.

Deer have long been heavily protected as messengers of the deity. Even today, deer in Nara are carefully protected as natural reserves.

Todai-ji Temple

Todai-ji Temple is one of the most famous temples in Japan and a UNESCO World Heritage Site. It is most known for its Great Buddha Hall, which houses a gigantic bronze statue of Buddha. The Great Buddha Hall is the world's largest wooden building.

The Great Buddha statue inside is a magnificent sight and a symbol of peace.



Day 9: Kyoto

- All day free time.

Optional Suggestion: Tea ceremony



Tea ceremonies are a traditional Japanese cultural experience. Geishas will typically be trained to organize this ceremony. In the Tea Ceremony, you can experience how to make your own Japanese powdered green tea, its history and manners.



Day10: Kyoto/ Hiroshima

- Transfer to Hiroshima from Kyoto.

Atomic bomb dome and Peace Memorial

Hiroshima Peace Memorial Park is a somber and significant site dedicated to promoting peace and remembering the victims of the atomic bombing in 1945. Located in Hiroshima's city center, the park features several monuments, including the Atomic Bomb Dome, which was left standing as a symbol of destruction. The Hiroshima Peace Memorial Museum exhibits powerful displays about the bombing and its aftermath.



Day 11: Hiroshima

Itsukushima shrine



Miyajima is famous for its torii gate standing on the sea. The entire island is revered as an island of deity, and a shrine is built under the sea because it is too awe-inspiring to be built on land. Miyajima is also a place where you can enjoy eating and walking around, especially large oysters, Japanese sweets and Hiroshima-style okonomiyaki.

Day 12: Hiroshima/Osaka

- Transfer to Osaka from Hiroshima.

Osaka Local Food

Kushikatsu, takoyaki, and okonomiyaki are popular local foods in Osaka. The local way to eat it is with sauce or mayonnaise. Kushikatsu are cutlets made from a variety of meats and served on skewers. Takoyaki is a dish of flour dough inside which octopus is placed. Okonomiyaki is a dish made of flour dough with vegetables and meat. These local foods are especially favored and eaten in Osaka, and there are restaurants everywhere in Osaka.



Kushikatsu



Takoyaki



Okonomiyaki

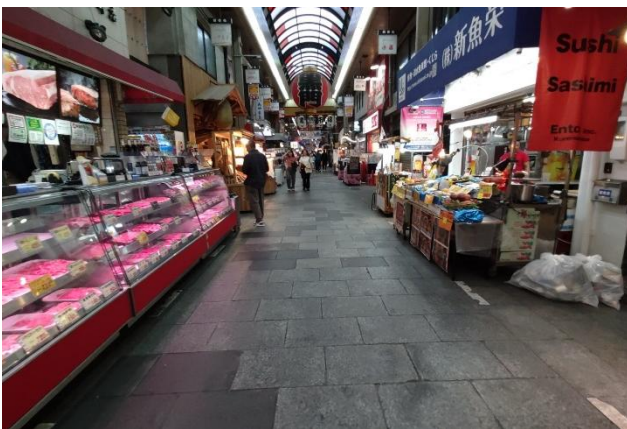
Day13: Osaka

Osaka Castle

Osaka Castle is a historic landmark in Osaka, known for its impressive architecture and cultural significance. Built in the 16th century by Toyotomi Hideyoshi, the castle played a key role in Japan's unification. The current structure, rebuilt in the 1930s, features a museum with exhibits about the castle's history and the Sengoku period.



Kuromon Ichiba Market



Kuromon Ichiba Market in Osaka is a bustling food market known for its fresh seafood, local produce, and street food with over 190 years of history. Often called "Osaka's kitchen", it offers a wide variety of traditional Japanese ingredients, snacks, and delicacies. Visitors can sample grilled seafood, takoyaki, sushi, and sweets while exploring the vibrant market.

Dotonbori

Dotonbori is most famous for its Glico sign, the symbol of Osaka. It is also famous for its delicious gourmet food, including Okonomiyaki, Takoyaki, and Nikuman buns. Osaka is famous for its many comedians, and walking along Dotonbori, one can feel the cheerful atmosphere and lively people.



Day 14: Osaka

Transfer from hotel to Kansai airport.

Departure from Kansai International Airport (KIX).